

Europlanet 2020 Research Infrastructure (RI)

Bringing together Europe's leading planetary researchers

Activity Co-ordinators

Networking Activities

NA1 - Innovation through Science Networking

- * Dr Ari-Matti Harri, FMI, Helsinki, Finland
- * Dr Norbert Krupp, MPG-MPS, Germany
- * Dr Philippe Louarn, CNRS-IRAP, Toulouse, France

NA2 - Impact through Outreach and Engagement

- * Mariana Barrosa, Science Office, Portugal
- * Anita Heward, Science Office, UK

Transnational Access

TA1 - Field Analogues

- * Dr Felipe Gomez Gomez, INTA-CAB, Madrid, Spain
- * Prof Gian Gabriele Ori, IRSPS, Pescara, Italy

TA2 - The Distributed Planetary Simulation Facility

- * Dr Jörn Helbert, DLR, Berlin, Germany
- * Dr Jonathan Merrison, Aarhus University, Denmark

TA3 - The Distributed Sample Analysis Facility

- * Prof Gareth Davis, VU Amsterdam, Netherlands
- * Prof Albert Galy, CNRS-CRPG, Nancy, France

Virtual Access Activities

VA1 - Planetary Space Weather Services

- * Prof Manuel Grande, University of Aberystwyth, Wales
- * Dr Nicolas André, CNRS-IRAP, Toulouse, France

VA2 - Virtual European Solar and Planetary Access

- * Dr Stefan Erard, Observatoire de Paris, France
- * Dr Baptiste Cecconi, Observatoire de Paris, France

Joint Research Activities

JRA1 Field analogues – Tirez and Dallol

- * Dr Felipe Gomez Gomez, INTA-CAB, Madrid, Spain
- * Prof Gian Gabriele Ori, IRSPS, Pescara, Italy

JRA2 - The Distributed Planetary Simulation Facility

- * Dr Jörn Helbert, DLR, Berlin, Germany
- * Dr Jonathan Merrison, Aarhus University, Denmark

JRA3 - The Distributed Sample Analysis Facility

- * Prof Gareth Davis, VU Amsterdam, Netherlands
- * Dr Sara Russell, Natural History Museum, UK

JRA4 - Planetary Space Weather Services

- * Dr Nicolas André, CNRS-IRAP, Toulouse, France
- * Prof Manuel Grande, University of Aberystwyth, Wales

JRA5 - Virtual European Solar and Planetary Access

- * Dr Stefan Erard, Observatoire de Paris, France
- * Dr Baptiste Cecconi, Observatoire de Paris, France

Project Website: <http://www.europlanet-2020-ri.eu>

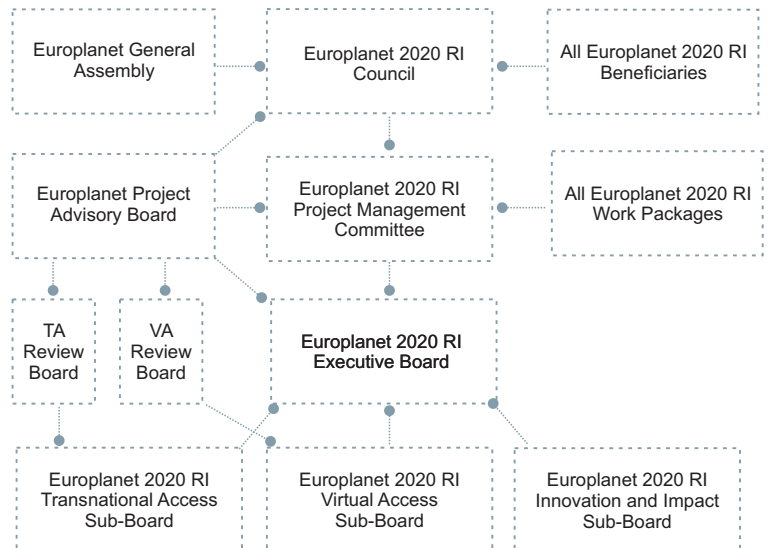


Figure 1. Management structure for Europlanet 2020 RI

Key Management Personnel

Scientific Co-ordinators

- * Prof Nigel Mason (Scientific Co-ordinator)
The Open University, UK
- * Dr Athena Coustenis (Deputy Co-ordinator)
Observatoire de Paris, France

Project Manager

- * Dr Barbara Pizzileo, The Open University, UK

Impact and Innovation Officer

- * Prof Steve Miller, University College London, UK

Inclusiveness Officer

- * Prof Karoly Szego, Wigner Research Centre for Physics, Hungary

Transnational Access Officer

- * Prof Gareth Davies, VU Amsterdam, Netherlands

Virtual Access Officer:

- * Dr Stefan Erard, Observatoire de Paris, France

Evaluation Officer

- * Nicolas Walter, European Science Foundation, Belgium

Policy Officer

- * Veronika Raszler, Science Office, Belgium